

Pontoon Dock

Issue 06 – February 2018



A development by
linkcity

Welcome to the February issue of the Pontoon Dock development newsletter, looking at the progress achieved and upcoming milestones.

Progress to date

The three blocks are now starting to take shape. There are specific teams dedicated to each of the blocks now. The following works are ongoing in each of the blocks:

- Block B:** Ground floor walls and podium slab ongoing.
- Block A:** Pile caps / ground beams and ground floor slab ongoing.
- Block C:** - Eastern area: ground floor walls completed.
- Western area: ground floor slab ongoing.

You will have doubtless seen that we have our second and final tower crane in place. Also complete is the key milestone completion of the irrigation tank. We are working on the main logistics route into site and we are busy removing obstructions and starting drainage works.

We have improved the lighting in all site hoarding and improved CCTV system coverage of the DLR station surroundings working together with the police and DLR. This will ensure the safety of commuters and our residents.

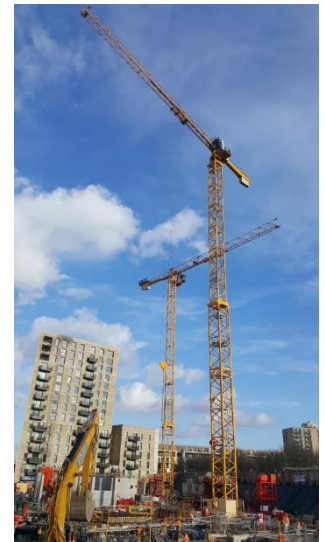
Forthcoming milestones

- Podium slab block B.
- Ground floor slab and gas membrane block A.
- Ground floor walls block A.

Events

On our first visit from the Considerate Constructors Scheme on 23rd January, we scored 40 points out of a possible 50.

On 20th March we will hold an event on site as part of the Build UK 'Open Doors' national campaign. On this day you will have the opportunity to visit our site and find out more about what we're doing. This will last around an hour and include a project presentation and site visit. To register please go to www.opendoors.construction. Registration is open until 12th March.



Shared **innovation**

www.bouygues-uk.com

Your safety is our concern

Bouygues UK takes every precaution to keep you safe throughout the construction process.

At all times, our site will be secure and surrounded by fencing but building sites can be hazardous places:

- We dig deep holes
- We erect scaffolding
- We use large, noisy machinery

Please do not enter the construction site, unless it is part of a pre-arranged visit by our project team.

- Our operatives and staff are trained to work safely

Please help us to keep you and children safe, and take extra care during the school holidays.



**HEALTH
& SAFETY
A SHARED
COMMITMENT!**

Considerate Constructors Scheme

Bouygues UK firmly supports the aims of the Considerate Constructors Scheme. All of our sites are registered with the Scheme, and regular visits from the Considerate Constructors monitor will help us to ensure that we continue to improve our performance in showing full respect for:

- Appearance
- Community
- Environment
- Safety
- Workforce

Please let us know if you have any concerns.

Our contact details are on the newsletter that you should regularly receive or on the site hoardings.

If you would like further information regarding the Scheme you can visit their website at www.ccscheme.org.uk



Wants to speak to us?

For more information about the development, please go to <http://www.pontoondockdevelopment.com/>. In the next few months, we hope to update the website with news of developments in the project. The website also provides details for employment opportunities being created by the project, for those interested.

Standard site working hours are:

Monday to Friday:
8am-6pm

Saturday (if needed):
8am-1pm

There should be no noisy works before 8am.

Communication and Community Liaison

Bouygues UK is committed to working with the local community and keeping clear and open lines of communication throughout the construction phase. We have appointed **Suzi Mattos** as our resident liaison officer. Please do write to us should you have any questions or concerns.

Your contacts



Left: **Ghassan Ali** – Project Manager
Email: ghassan.ali@bouygues-uk.com

Right: **Suzi Mattos** – Project Assistant
Email: suzi.mattos@bouygues-uk.com

Phone: 0800 083 7286



Shared innovation

www.bouygues-uk.com